

24°0'0"E 26°0'0"E 28°0'0"E 30°0'0"E 32°0'0"E 34°0'0"E 36°0'0"E

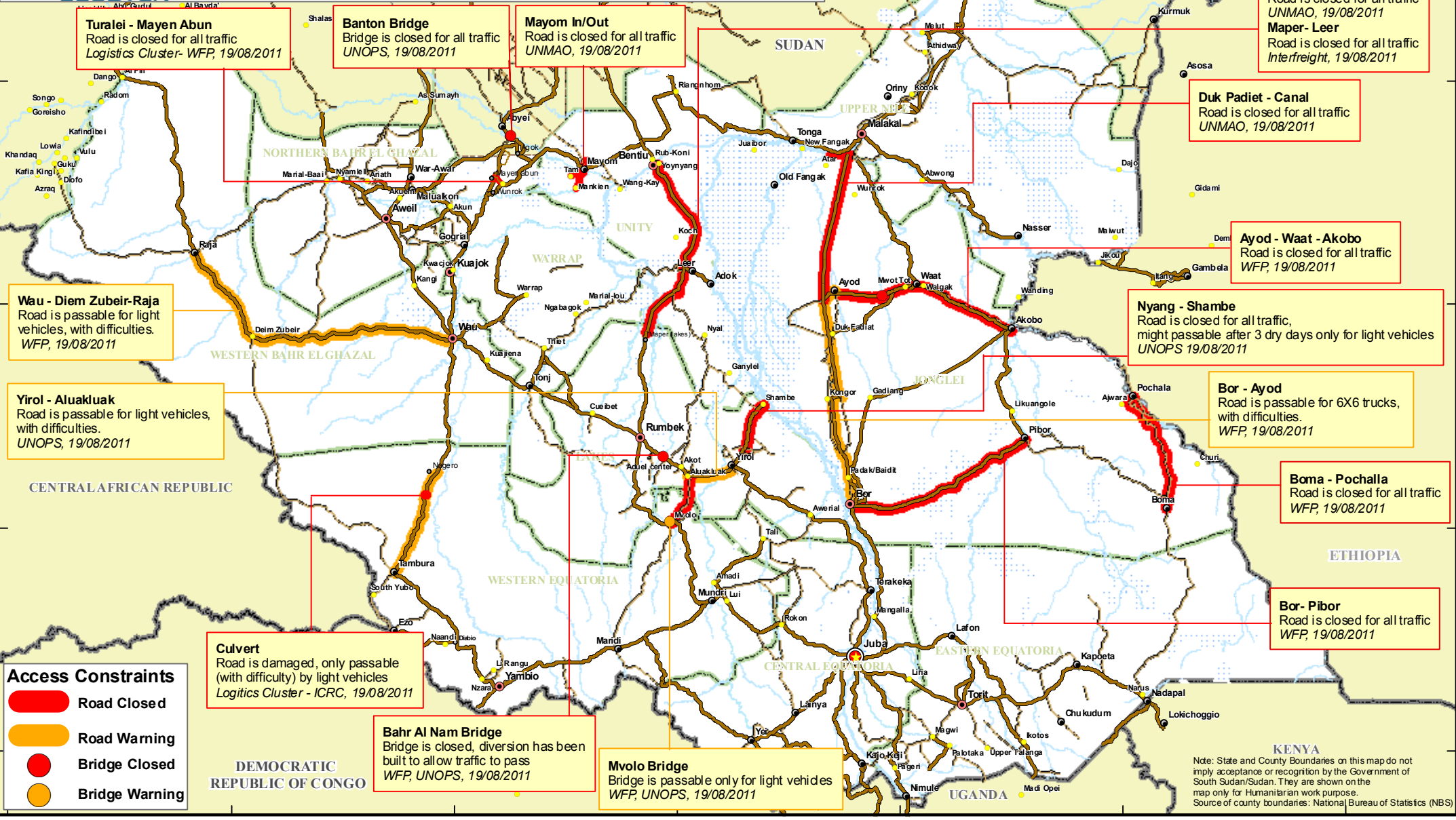
Access Constraints - August 19th 2011

Please submit any updates on access constraints to southsudan.logs@logcluster.org



10°0'0"N
8°0'0"N
6°0'0"N
4°0'0"N

10°0'0"N
8°0'0"N
6°0'0"N
4°0'0"N



Turalei - Mayen Abun
Road is closed for all traffic
Logistics Cluster- WFP, 19/08/2011

Banton Bridge
Bridge is closed for all traffic
UNOPS, 19/08/2011

Mayom In/Out
Road is closed for all traffic
UNMAO, 19/08/2011

Leer - Bentiu
Road is closed for all traffic
UNMAO, 19/08/2011
Mapper - Leer
Road is closed for all traffic
Interfreight, 19/08/2011

Duk Padiet - Canal
Road is closed for all traffic
UNMAO, 19/08/2011

Ayod - Waat - Akobo
Road is closed for all traffic
WFP, 19/08/2011

Nyang - Shambe
Road is closed for all traffic,
might passable after 3 dry days only for light vehicles
UNOPS 19/08/2011

Bor - Ayod
Road is passable for 6X6 trucks,
with difficulties.
WFP, 19/08/2011

Boma - Pochalla
Road is closed for all traffic
WFP, 19/08/2011

Bor - Pibor
Road is closed for all traffic
WFP, 19/08/2011

Wau - Diem Zubeir-Raja
Road is passable for light vehicles,
with difficulties.
WFP, 19/08/2011

Yriol - Aluakluak
Road is passable for light vehicles,
with difficulties.
UNOPS, 19/08/2011

Culvert
Road is damaged, only passable
(with difficulty) by light vehicles
Logistics Cluster - ICRC, 19/08/2011

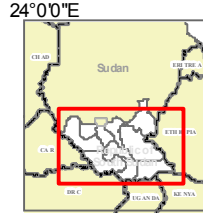
Bahr Al Nam Bridge
Bridge is closed, diversion has been
built to allow traffic to pass
WFP, UNOPS, 19/08/2011

Mvolo Bridge
Bridge is passable only for light vehicles
WFP, UNOPS, 19/08/2011

Access Constraints

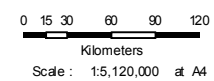
- Road Closed
- Road Warning
- Bridge Closed
- Bridge Warning

Kenya
Note: State and County Boundaries on this map do not imply acceptance or recognition by the Government of South Sudan/Sudan. They are shown on the map only for Humanitarian work purpose.
Source of county boundaries: National Bureau of Statistics (NBS)



Access Constraints - August 19th 2011

- Primary Road
- Secondary Road
- Unassessed track
- Rivers
- Fresh water marsh
- National Capital
- State Capital
- Primary Town
- Secondary Town
- International Boundary
- State Boundary



Data Sources: Logistics Cluster-WFP, OCHA, UNHAS, UNIMS, CGIAR, MAF, NASA, Univ. of Berne
Produced By: Logistics Cluster-WFP, Juba, South Sudan

Date Created: 19-August-2011
LC_SS_774_RoadClosures
Proj/Datum: Geographic/ WGS84
The boundaries and names and the designations used on this map do not imply official endorsement or acceptance by the United Nations/UN/WFP
Some map data not verified, use at your own risk. southsudan.logs@logcluster.org ; www.logcluster.org/sudan/maps

24°0'0"E 26°0'0"E 28°0'0"E 30°0'0"E 32°0'0"E 34°0'0"E 36°0'0"E